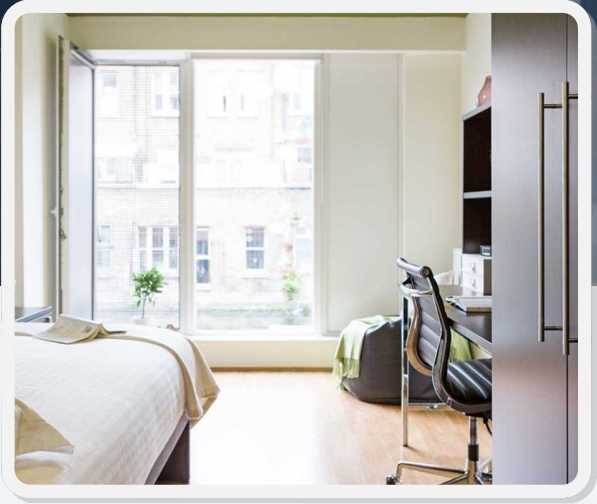
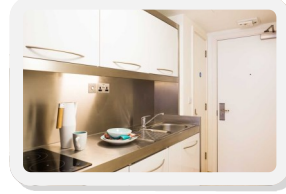
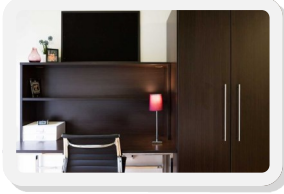
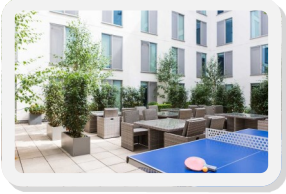


Chapter Portobello



Type of accommodation

Self-catering, single en suite studios, suitable for students.

Rooms / Bathrooms / Cooking facilities

Single en suite room – private en suite bathroom and kitchenette. Each room contains a small double bed with storage - drawers, a wardrobe with hanging space and shelving, work desk and chair.

Bathrooms

Bathrooms are modern with shower, wash basin & WC.

Utilities

The accommodation fee includes electricity, gas and water. Students from some countries may require a transformer and a plug adaptor.

Internet

Wi-Fi internet connection throughout the residence.

Laundry and cleaning

Bed linen is provided but towels are not provided. Students are responsible for cleaning their room,

Travel Time / Cost

Travel time to our Kensington school is about 30 minutes by bus and underground.

Travel cards cost £7 and for unlimited travel by bus and train for adults in travel zones 1 & 2 £40.70/week.

Security and keys

24-hour security. Students have a key-card for bedrooms – lost cards incur £5.00 fee to replace.

Arrival and departure

Check-in from 3pm; Check-out 10am

Visitors/guests

Students may have daytime visitors. Overnight guests are also permitted by arrangement with the residence. All guests must bring photo ID.

Noise and restrictions

Students are requested to keep noise levels to a minimum especially after 10 pm. Smoking is strictly forbidden inside the building.

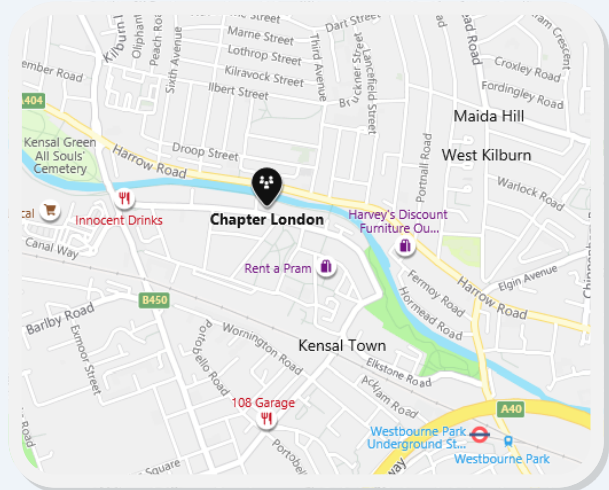
Availability

Year-round students aged 18 and over. Minimum 2-week booking.

Notice/Cancellation

2 weeks' notice before arrival and 4 weeks' notice after arrival to cancel or shorten a stay; otherwise a 2/4 week Cancellation Fee will be charged. You will also be charged a £75 cancellation fee if you cancel after arrival.

Chapter Portobello is in Notting Hill, located a short walk from Westbourne Park Station. In a tranquil location, with a canal running alongside the building. Private gym, study area, screening room and courtyard.



2023/24 Rates per person per week

January - August 27, 2023: £420 / week

From September 3, 2023 - August 25 2024: £425 / week

Service Fees

Bedding Pack, Kitchen Pack: £125, one payment only