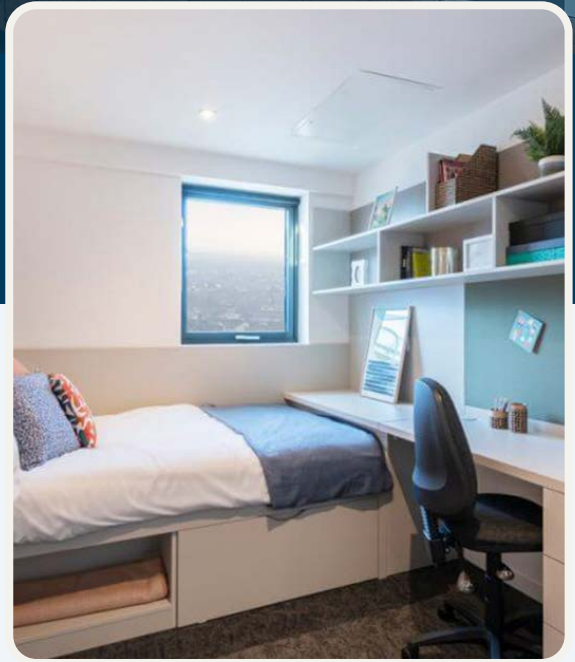
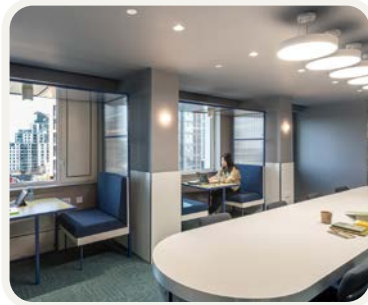




Vega Residence****



Type of accommodation

Self-catering, single en-suite shower room in a shared flat with living area & kitchen. Suitable for students (18+ years).

Rooms / Bathroom

Single ensuite room with private shower room, washbasin and WC. Each room contains a bed with under bed storage, wardrobe, bookcases, cupboards, study desk with chair. Size: 13m²

Cooking Facilities / Shared Living Space

In the shared living space, there is a kitchen with integrated appliances, including: oven, hob, microwave, fridge freezer, kettle, toaster, iron / ironing board, a dining table, soft seating, and TV. Utensils, cutlery, pans and crockery are provided in the Kitchen pack.

Internet

Free high speed Wi-Fi.

Travel time / Cost

Nearest underground station is Vauxhall, on the Victoria line. Travel time to our Kensington school is about 20-25 minutes by underground. Travel cards cost £7, and for unlimited travel by bus and train for adults in travel zones 1 & 2 £40.70/week.

Minimum age 18

Vega Residence is located in Vauxhall, near Victoria Station and is an impressive property with 37 floors, with a spacious rooftop terrace with views of the River Thames. It is a five-minute walk from Vauxhall station which provides easy access to Frances King School and the many attractions of central London. Amenities include an on-site gym, gaming zone, cinema room, rooftop terrace, and private dining area. Social spaces and regular events make the student experience more enjoyable.



6 Miles St, London SW8 1RZ



Vega Residence****

Utilities

The accommodation fee includes electricity, gas and water. Students from some countries may require a transformer and a plug adaptor.

Laundry and Cleaning

Bed linen is provided in the Linen Pack. Students should bring their own towels. Students are responsible for cleaning their room. Free kitchen cleaning once a week.

Arrival and departure

Arrival from 15.00, departure by 10.00.

Security and keys

24-hour security. Students Fob key for your flat and room.

Visitors / Guests

By arrangement with the Residence Manager.

Noise and Restrictions

Students are requested to keep noise levels to a minimum especially after 10pm. Smoking is strictly forbidden inside the building.

Availability

All year, minimum stay 2 weeks

Notice / Cancellation

Before arrival – 3 weeks' notice required otherwise a 3-week cancellation fee will be charged.

After arrival – 4 weeks' notice required, otherwise a 4-week cancellation fee will be charged.

Facilities



Laundry & Cleaning



Cinema Room



Private Bathroom



Internet Access



Gym



Kitchen Facilities

2024 Rates

per person per week

Standard Ensuite: En-suite room in a shared flat includes a private shower room and a shared living space and kitchen.

Price per week: £492.

Service fees: Linen Pack and initial clean: £189; Kitchen pack: £114.