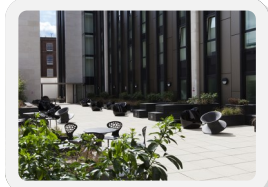
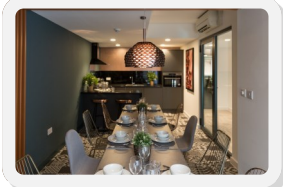
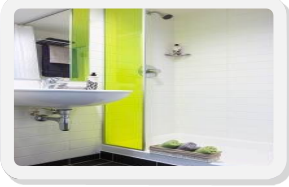
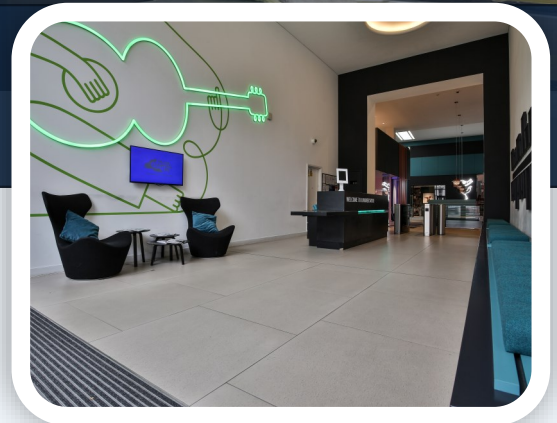


# iQ Hammersmith (\*\*\*)



## Type of accommodation

Self-catering, large, en-suite studios suitable for students only.

## Rooms / Facilities

Each studio room contains a small double bed with storage, a pedestal with drawers, wardrobe with hanging space and shelving, work desk and chair and notice board. The residence facilities include: screening room, games room, lounge area, gym, Fitness on Demand, laundry, dining room and kitchen, secure parking for bicycles and first-floor outdoor courtyard area. Frances King Standard studios are located on the 1<sup>st</sup> to 4<sup>th</sup> floors.

## Kitchen / Meals

All single studios have a kitchenette with two-ring electric hob, oven/microwave, fridge/freezer, kettle, sink, storage space, small table with 2 chairs.

## Bathrooms

Modern, en-suite bathroom facilities in every room (shower, sink & WC).

## Utilities

The accommodation fee includes electricity, gas and water. Students from some countries may require a transformer and a plug adaptor.

## Internet

Wi-Fi internet connection in rooms and throughout the residence, and also cable connection in rooms (cable not provided).

## Laundry and cleaning

Bed linen and towels are provided. Students are responsible for cleaning their rooms and washing their own bed linen. There is a laundry room (£3.00/wash; £1.50/dry). Cleaning packages are available and can be booked and paid for after arrival (from £35.50 /week).

## Travel Time / Cost

Travel time to our Kensington school is about 15 minutes by Underground. Travel cards cost £7 and for unlimited travel by bus and train for adults in travel zones 1 & 2 £40.70/ week

## Security and keys

24-hour security. Students have a key-card for bedrooms – lost cards incur £5.00 fee to replace.

## Damage

On arrival at the residence the student will be asked to sign an inventory form indicating any existing damage to the room. Make sure to return it to the residence reception on your first day. Student will be responsible for any damage caused during their stay. Damage charges will be informed to the student no later than 72 hours after departure.

## Arrival and departure

Check-in from 3pm; Check-out 10am

## Visitors/guests

Students may have daytime visitors. Overnight guests are also permitted by arrangement with the residence. All guests must bring photo ID.

## Noise and restrictions

Students are requested to keep noise levels to a minimum especially after 10 pm. Smoking is strictly forbidden inside the building.

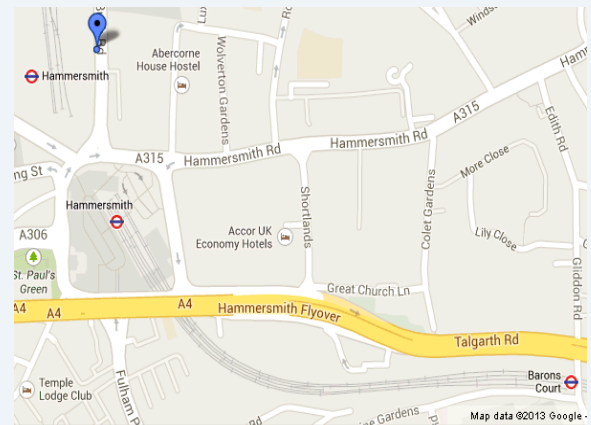
## Availability

Summer only, to students aged 18 and over. Minimum 2 week booking.

## Notice

3 weeks' notice to cancel or shorten a stay before or after arrival; otherwise, a 3-week Cancellation Fee will be charged. You will also be charged a £75 cancellation fee if you cancel after arrival. -

*iQ Hammersmith is located in the heart of West London, in travel zone 2, on average just a 15 minute underground trip to our Kensington Schools. It is a short walk to entertainment venues such as 'The Hammersmith Apollo' and the 'Lyric Theatre' and is close to a multitude of shops, restaurants and bars. This accommodation is suitable for students. The residence was built on the site of the former 'Hammersmith Palais', which featured artists and groups such as The Beatles, The Rolling Stones and David Bowie.*



## Rates per person per week 9 September 2023 to 31 August 2024

£505 week (minimum 2 weeks)

Service fee: £170(one payment only). Covers linen and

